

The Official

AEG OREGON CHAPTER NEWSLETTER

<http://www.aegoregon.org>

December Meeting Details

Tuesday, December 19th

Location: Old Market Pub
6959 SW Multnomah Blvd
Portland, Oregon

6:00 pm Social

6:45 pm Dinner

7:30 pm Presentation

Dinner: Salad and Pizza

\$25 Dinner

Exact Change Appreciated
Students FREE with RSVP
(\$5 if no RSVP)

Reservations by 4 pm Friday
December 15th at

<http://aeg-or-2017-12.brownpapertickets.com>

There is a \$2 surcharge for
those who do not reserve by
the deadline

Upcoming Meetings:

Jan 3rd AEG/ASCE Meeting
Feb 20th Ray Wells
Mar 20th TBD
Apr 19th John Wakabayashi
May 15th Nick Zenter
Student Poster Night



ODOT Landslide Response during Winter 2016-2017

Guest Speakers: Bryan Wavra and Derrick Hayes

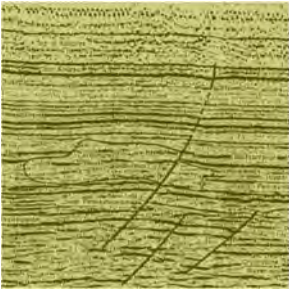
The 2016 - 2017 winter was the wettest on record, and as a result ODOT responded to a large number of emergency landslides. OR224 at MP 10 experienced at least 7 significant failures in two weeks prompting the closure of the highway. The official emergency declaration required rapid analysis and construction of a landslide mitigation package consisting of drainage and structural solutions. This presentation will focus on the procurement timeline and final design build solution.

Bio: Bryan Wavra, PE, GE

Bryan has represented GeoStabilization's northwest region in a geotechnical engineering and project development capacity since 2010. During his tenure Bryan has been involved in over 100 geohazard mitigation projects throughout Oregon, Washington, Montana, and Idaho. Prior to joining GSI, Bryan completed ten years of geotechnical consulting services to a variety of public and private entities. Bryan graduated from Oregon State University with both Bachelor and Master of Science Degrees in Civil Engineering with a geotechnical engineering emphasis. He is a registered civil engineer in Oregon and Washington and holds a specialty geotechnical engineering registration in Oregon.

Bio: Derrick Hayes, PE, GE

Derrick brings nearly 15 years of geotechnical engineering experience across a broad range of geotechnical topics. In his current position Derrick is responsible for engineering design and construction quality control for all of GSI's project in Oregon, Washington, Idaho, Montana, in addition to, providing Technical Review for GSI operations in California, Nevada, and Western Canada. Before joining GSI in 2014 as the Pacific NW Regional Engineer, Derrick was a Senior Principle Engineer at Shannon & Wilson in Portland. As a consultant, Derrick's professional experience includes Geotechnical Engineering task leads for projects such as the I-5: Columbia River Crossing Bridge, ODOT bridge seismic retrofit program, and numerous water/wastewater and transportation related projects. As part of the I-5 Columbia River Crossing Project Derrick was integral in developing the "attempted" world's highest capacity drilled shaft load test program.



Message from the Chair

On behalf of the Oregon Chapter Board I want to wish everyone Happy Holidays! It is so hard to believe that we are nearly halfway through the 2017-2018 Season. I am looking forward to our upcoming speakers and possibly a field trip sometime in 2018.

Thanks to everyone who attended the November meeting. Unfortunately, I was trapped in Maui over the Thanksgiving week but once again we had a great turnout of student and professional attendees. A special thanks to Dr. Ashley Streig with Portland State University on her presentation on *Paleo-earthquakes: How big? How often? Examples from Interplate and Intraplate settings*. Hopefully, many of you were able to make connections and perceive the future of our industry's integration of lidar technology through her work in identifying and aging fault extension and rupture histories of two major faults.

Our December speakers are Bryan Wavra and Derrick Hayes with Geostabilization International (GSI) presenting on the results of ODOT's response to a large number of emergency landslides during last winter. For example, OR224 at MP 10 experienced at least 7 significant failures on its own in a two-week period, prompting the closure of the highway. Their presentation will focus on the procurement timeline and final design build solution post-emergency declaration that required rapid analysis and construction of a landslide mitigation package consisting of drainage and structural solutions.

Since our January meeting is scheduled for early in the month, I wanted to set a reminder in this newsletter to get it on the calendar. On January 3rd, we will be having our annual joint AEG/ASCE at the same venue as last year's joint meeting – IBU Public House on Beaverton-Hillsdale Highway. Needless to say, I'm certain we are all hoping for better road conditions than last year. More details to follow!

Here are some recent announcements from AEG National that are worth noting:

Student Opportunities:

AEG Foundation Scholarship Applications now open! The application process is available now for 2018 scholarships. The **deadline to apply is February 1, 2018**. You may go to www.aegfoundation.org to view the details and to apply. Applicants must be student members of AEG in order to be considered.

Upcoming Symposia/Meetings:

Living with Earth Hazards in Western Washington; February 16-18, 2018; McCaw Hall at the Seattle Center; Seattle, Washington

61st AEG Annual Meeting / 13th IAEG Congress; September 15-23, 2018; Hyatt Regency San Francisco, San Francisco, CA

Registration is now open - be sure to register today! For meeting information and updates visit www.aegweb.org/SanFrancisco2018 Call for Published Papers is now open. Submit your abstract today!

As we near the end of 2017, I want to remind all current Oregon Chapter members that your memberships will expire at the end of the year. Please renew today and encourage fellow students and professionals to become new members! The long-term success of our Chapter and AEG nationally only occurs with the continual growth of membership. If you are interested in creating a new chapter within the Oregon Chapter boundaries please let me know or contact Linda Mark, AEG Region 3 – Pacific Regional Director (lmark@esassoc.com).

I look forward to seeing you on Tuesday, December 19th at the Old Market Pub. Don't forget to sign up using our electronic registration process.

Have a safe and Happy Holiday Season,

Mark Swank, CEG
AEG Oregon Chapter Chair



*“The earth is large and
old enough to teach us
modesty.”*

Hans Cloos



TECCO® SYSTEM³ – Your slopes made stable

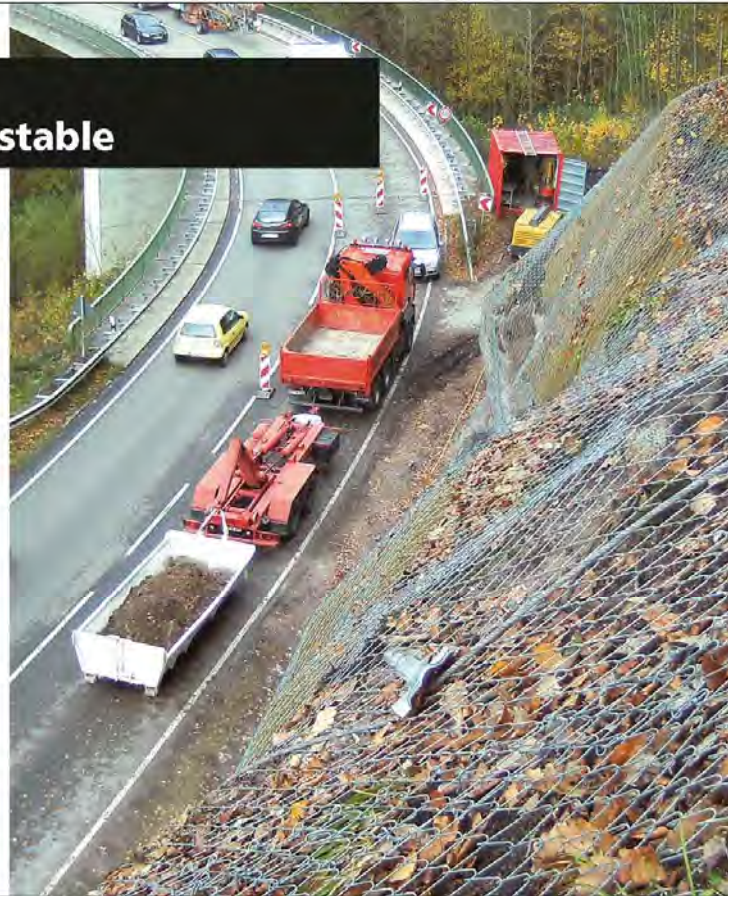
- TECCO® SYSTEM³ can be optimized depending on the subsoil with several mesh types
- meshes made of 2 mm, 3 mm and 4 mm diameter high-tensile steel wire
- optimization of anchor spacing thanks to two new spike plate sizes
- RUVOLUM® dimensioning software based on large-scale field and model tests
- small CO₂ footprint and option to cover with natural vegetation



Scan and watch our movie on
[www.geobrugg.com/youtube/
TECCO-fullscale](http://www.geobrugg.com/youtube/TECCO-fullscale)



Geobrugg North America, LLC
Tim Shevlin, PG • Northwestern USA
Phone (503) 423-7258 • Fax (505) 771-4081
tim.shevlin@geobrugg.com
www.geobrugg.com



GEOPHYSICAL SURVEYING
for environmental
and geotechnical
applications



TERRA HYDR^{INC}

(503) 625-4000
24 Hour Service

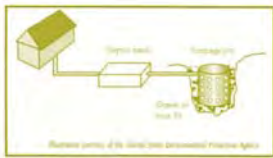
PO Box 3616
Portland Or. 97208

*Proudly serving the
region's premiere
consultants and
quality conscious
industrial clients*

ENVIRONMENTAL CONSTRUCTION SERVICES
HEAVY CONSTRUCTION / EXCAVATION
INDUSTRIAL SERVICES & CLEANING
EMERGENCY RESPONSE / SPECIAL PROJECTS
CONFINED SPACE ENTRY & RESCUE SERVICES

www.terrahidr.com | CCB# 101128

503.501.7846
nikos@pacificgeophysics.com
www.pacificgeophysics.com



Your Environmental, Geotechnical & Clean Water Professionals

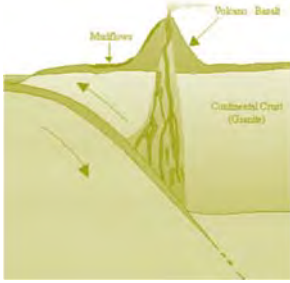
253-604-4878

info@holtservicesinc.com

www.holtservicesinc.com

*“Keen observation is at
least as necessary as
penetrating analysis”*

Karl Terzaghi



WHERE COMPLEX CHALLENGES MEET QUALITY SOLUTIONS

PBS is a trusted source of practical, sustainable solutions to environmental and engineering challenges—enabling projects to proceed and communities to grow and thrive.

Pictured: Vancouver Waterfront Redevelopment



11 LOCATIONS | PBSUSA.COM

Engineering (Geotechnical, Enviro. & Civil)
Environmental Services ▪ Health & Safety
Natural Resources ▪ Permitting ▪ Surveying



EARTH DYNAMICS LLC

2284 NW. Thurman St.
Portland, OR 97210
(503) 227-7659
info@earthdyn.com

www.earthdyn.com

Providing Quality Geophysical Services since 1984

Engineering Geophysics:

- Seismic Refraction/Reflection
- Shearwave Velocity Studies
- Electrical Resistivity Profiling
- Ground Penetrating Radar
- Magnetics/Electromagnetics
- Gravity
- Marine Geophysics

Vibration & Noise Analysis:

- Remote Vibration Monitoring
- Real-time Frequency Analysis
- Construction Monitoring
- Demolition Monitoring
- Blast Design and Monitoring
- Pre-construction Surveys
- Sensitive Equipment Certification

Rock Mechanics:

- Uniaxial Compressive Strength
- Direct and Traixial Shear Strength
- Direct and Indirect Tensile Strength
- Dynamic & Static Elastic Moduli
- Thermal Properties
- Density & Porosity
- Moisture Content





EARTH WATER

Geotechnical Engineering
 Environmental Remediation
 Water Resources
 Stormwater
 Data + Mapping

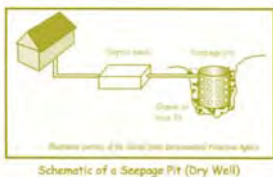
Portland
 Seattle
 Bainbridge Island
 Bellingham
 Wenatchee
 Yakima



Aspect
 CONSULTING

www.aspectconsulting.com
 971.865.5890

EARTH WATER





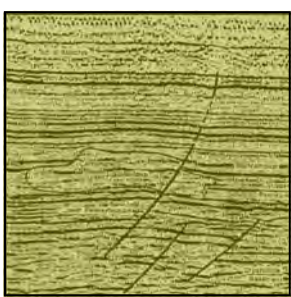
HI-TECH ROCKFALL CONSTRUCTION INC.

HI-TECH Rockfall is a General Contractor that specializes in Rockfall Mitigation and has been the industry leader for over 18 years. Our Highly Trained & Skilled Employees provide us the Highest Safety Record in the Industry.



We Service Multiple Industries which include:

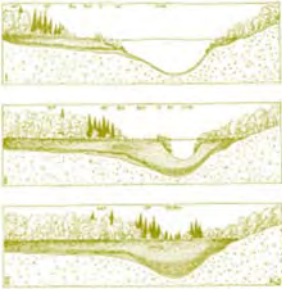
Government & Military	Highways
Mines & Quarries	Railroads
Commercial & Residential	Utilities



- Products and Services include:
- | | |
|-------------------------------------|--------------------------|
| Highwall Stabilization | Wire Mesh Drapery |
| Rock Scaling | Rock Bolts |
| Rock Dowels | Shotcrete |
| Rockfall Barriers | Avalanche Nets |
| Instrumentation Installation | Rope Access Work |

HI-TECH Rockfall Construction, Inc. P.O. Box 674, Forest Grove, OR 97116	Office: (503) 357-6508 www.hitechrockfall.com
---	--





**SOIL and FOUNDATION
 STABILIZATION SOLUTIONS**
 in OREGON and WASHINGTON
 503.649.8111 info@plisystems.com

- Drilled and Grouted Tie-Back Anchors
- Geotechnical Drilling Explorations
- Shoring (temporary & permanent)
- Drainage, Including Horizontal
- Helical Anchors & Piles
- Drilled Shafts (caissons)
- Limited Access Drilling
- Landslide Stabilization

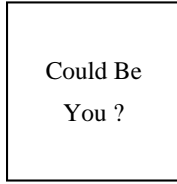
- Elevator Jack Shafts
- Displacement Piles
- Wall Construction
- Sheet Pile Walls
- Injection Boring
- Underpinning
- Rock Anchors
- Rock Coring
- Dewatering
- Pile Driving
- Micropiles
- Shotcrete
- Soil Nails
- Grouting
- Pin Piles
- SPT



Chapter Officers & Committee Chairs



Chair:
Mark Swank
Aspect Consulting
markswank@comcast.net



Program Chair:
Vacant



Legislature Chair:
Jennifer DiGiulio
National Energy Technology Laboratory,
U.S. Department of Energy
jennifer.digiulio@netl.doe.gov



Chair Elect:
Chris Humphrey
FERC
geohumphrey@yahoo.com



Field-Trip Chair:
Erin Dunbar
Geosyntec Consultants, Inc.
dunbar.erin@gmail.com



Newsletter Editor:
Scott Braunsten
PBS Engineering and Environmental



Treasurer:
Benjamin George
Cornforth Consultants, Inc.
bgeorge@cornforthconsultants.com



Membership Chair:
Ruth Wilmoth
Columbia Geotechnical, Inc.
ruthwilmoth@comcast.net



Webpage Editor:
Matt Randall
PBS Engineering and Environmental
matt.randall@pbsusa.com



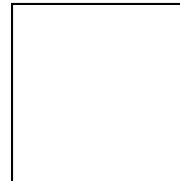
Secretary:
Michael Marshall
GRI
mmarshall@gri.com

**The Oregon Chapter is also on
the web at**

<http://www.aegoregon.org>

National AEG webpage:

<http://aegweb.org>



PSU Student Chapter President:
Portland State University



Past Chair:
Stephen Hay
Oregon Department of Transportation
stephen56362@gmail.com

Subscribe to the newsletter by sending any e-mail to
aegoregon-subscribe@groups.electricmembers.net

Thanks For Supporting AEG

Aspect Consulting, Columbia Geotechnical, Cornforth Consultants,
Federal Energy Regulatory Commission (FERC), GRI, NACSE, Oregon Department of Transportation,
OSU, PBS Engineering and Environmental, Portland State University

The AEG Oregon Chapter Newsletter

The Association of Engineering Geologists (AEG) contributes to its members' professional success and the public welfare by providing leadership, advocacy, and applied research in environmental and engineering geology. AEG's values are based on the belief that its members have a responsibility to assume stewardship over their fields of expertise. AEG is the acknowledged international leader in environmental and engineering geology, and is greatly respected for its stewardship of the profession.

AEG OREGON CHAPTER NEWSLETTER is published monthly from September through May. Subscriptions are for members of AEG affiliated with the Oregon Chapter or other Chapters, and other interested people who have requested and paid a local subscription fee of \$10.00. E-mail subscriptions are free. News items are invited and should be sent to: Scott Braunsten, AEG Oregon Chapter Newsletter Editor, PBS Engineering and Environmental, 4412 SW Corbett Avenue, Portland, OR 97239, e-mail: scott.braunsten@pbsusa.com, phone (503) 417-7737. Electronic media is preferred. Deadline for submittal is the 25th of the month. Advertising: business card \$100/yr; ¼ page \$200/yr; ½ page \$350/yr; 1 page \$450/yr.

